

# MicroLouvre Lighting Solutions

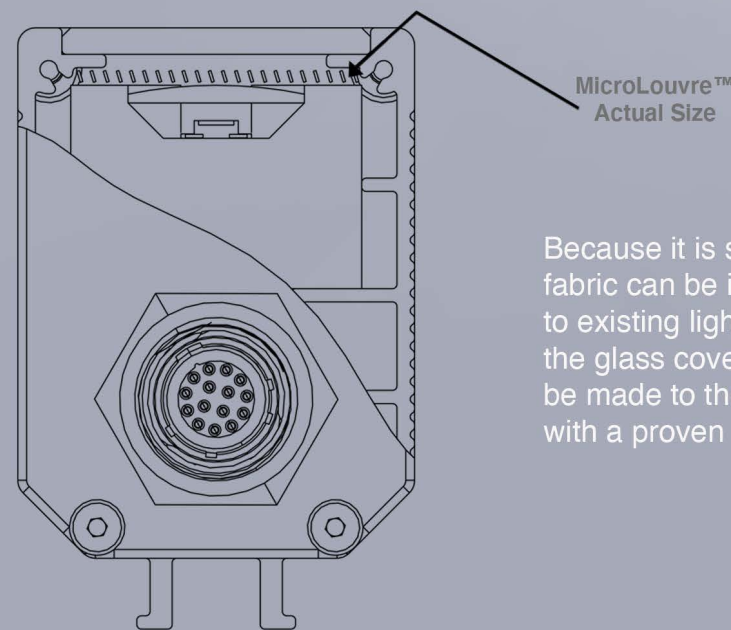
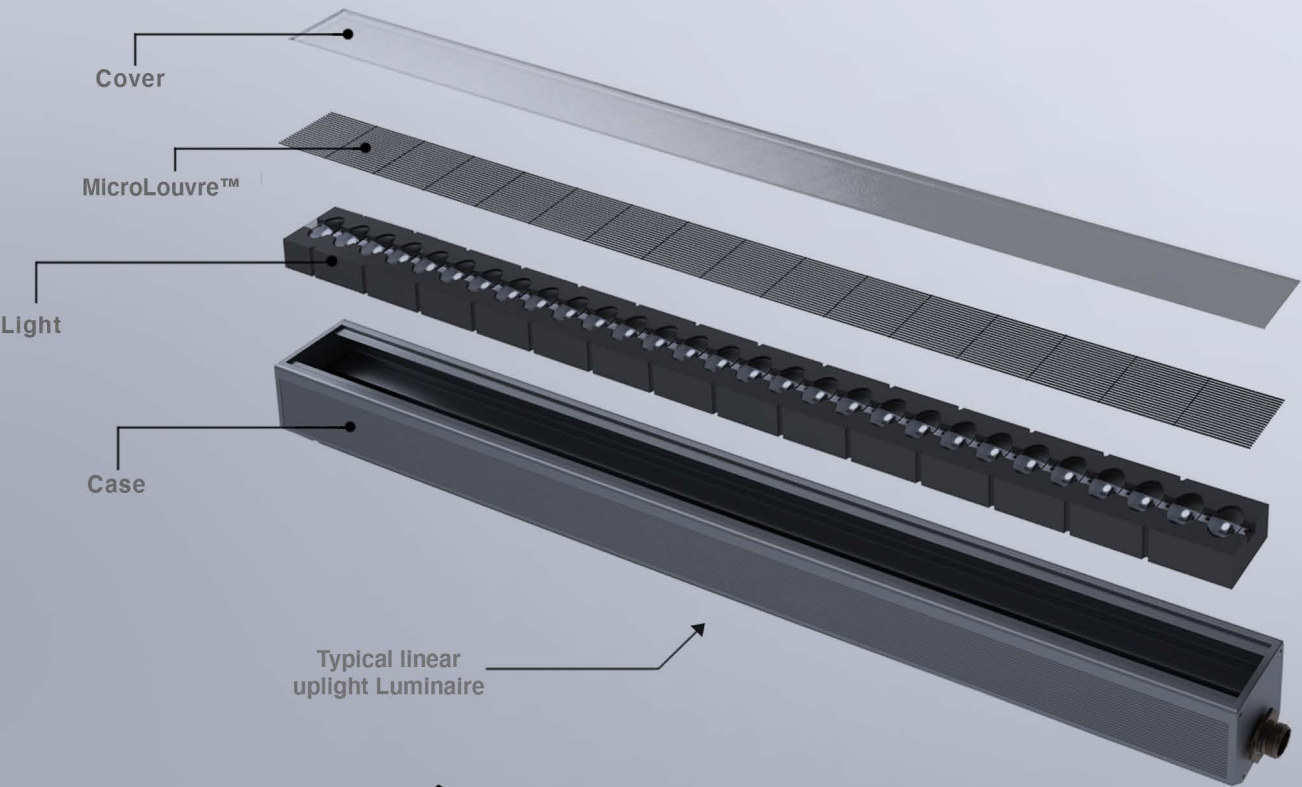
The ultimate directional light control and anti-glare accessory





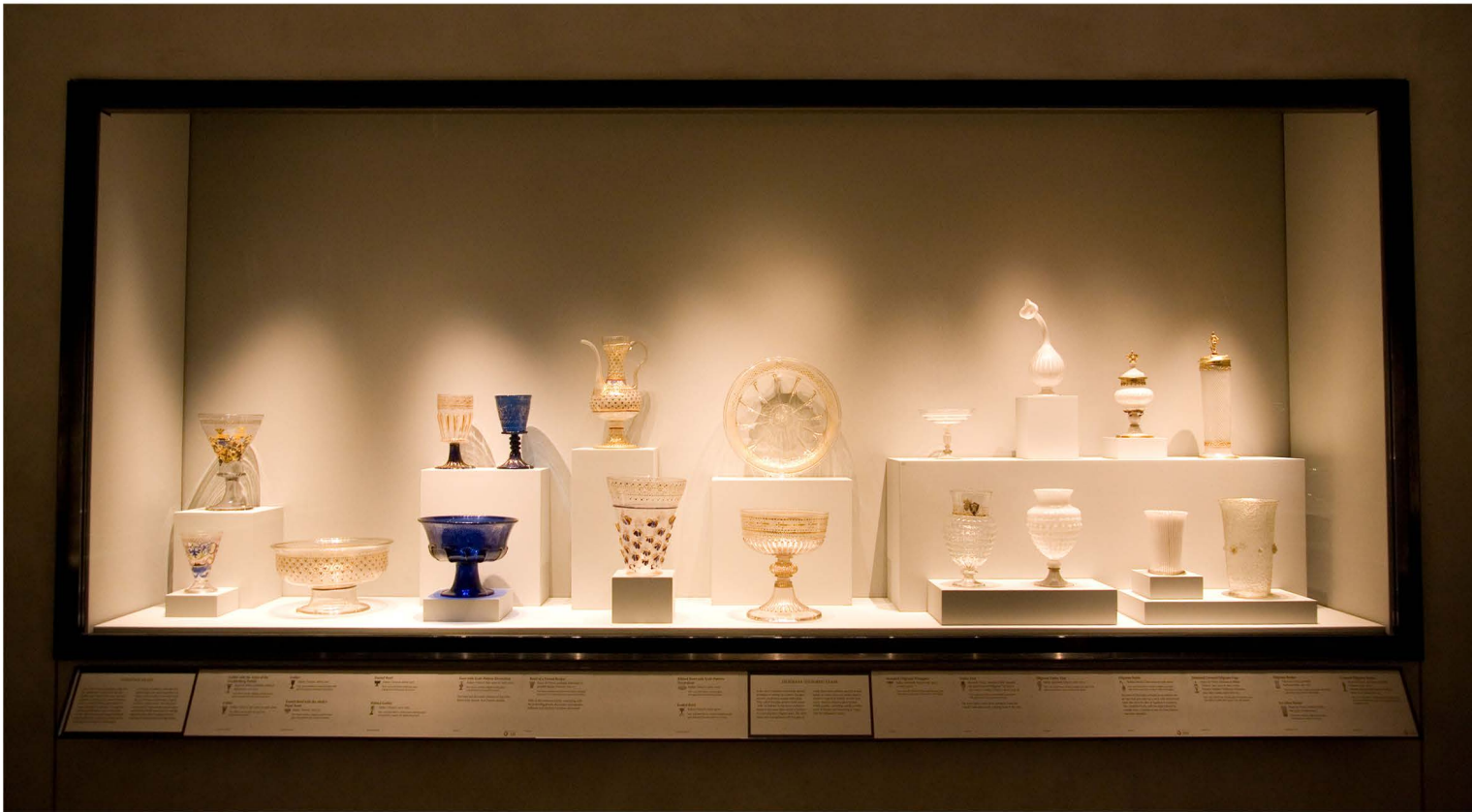
What is MicroLouvre™?

MicroLouvre™ is a simple, engineered metal louvre fabric that has been made to fine tolerances and which is designed to provide exceptional control and diffusion of sun, heat, light and air. It comprises 17 paper-thin durable bronze louvres woven into every inch of the fabric, and the fabric itself is only 1.5mm thick. In fact, it is the world's thinnest and lightest metal louvre fabric.



Because it is so thin and easy to manipulate, the metal fabric can be integrated into new products or retrofitted to existing lighting units. It is usually installed easily under the glass cover without the need for any adjustments to be made to the casing. It can be externally applied with a proven 50+ years durability.

Concealed Light Source



The light source is concealed from one direction whilst illuminating from the other.

Angular selective technology used in the production of MicroLouvre™ can provide either a symmetrical beam or asymmetrical light kick, to suit the application.



Uplighter: Bar wall wash



Uplighter: Great Pyramids Tomb

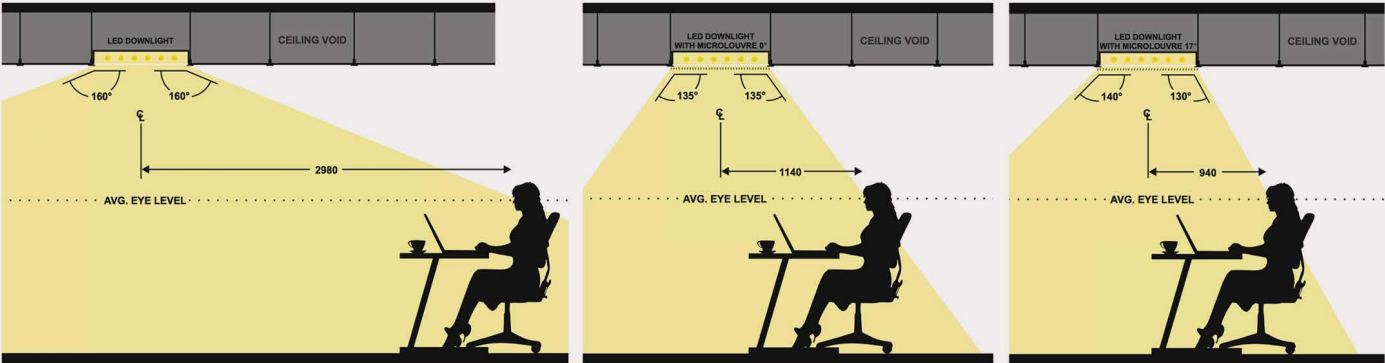
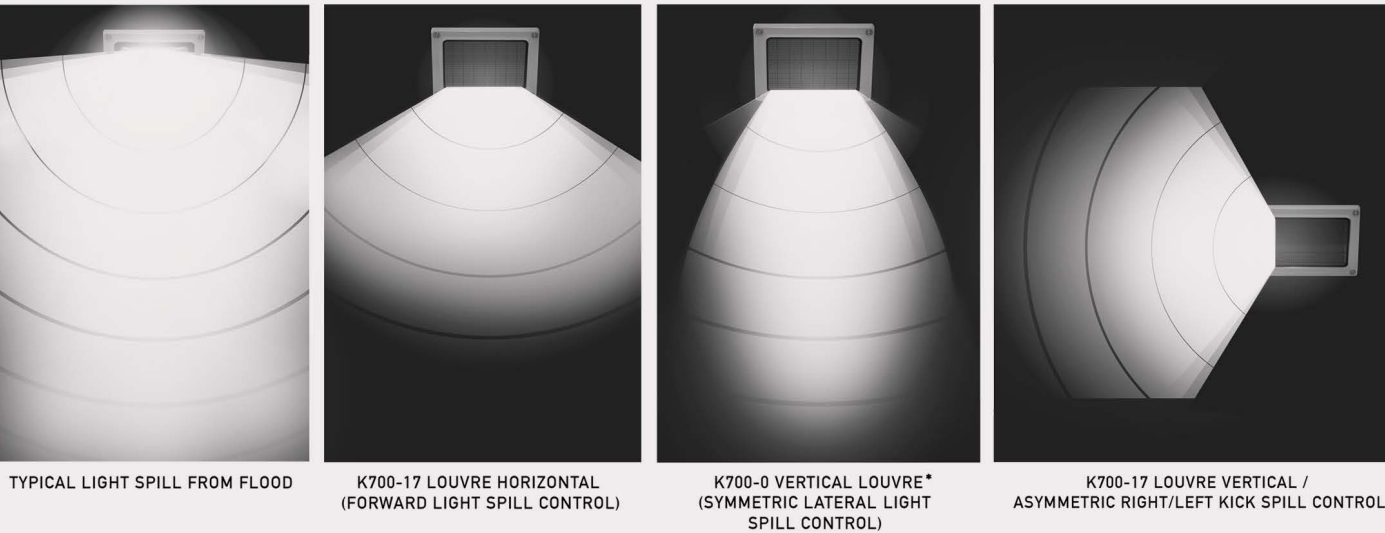


Directional Light Control



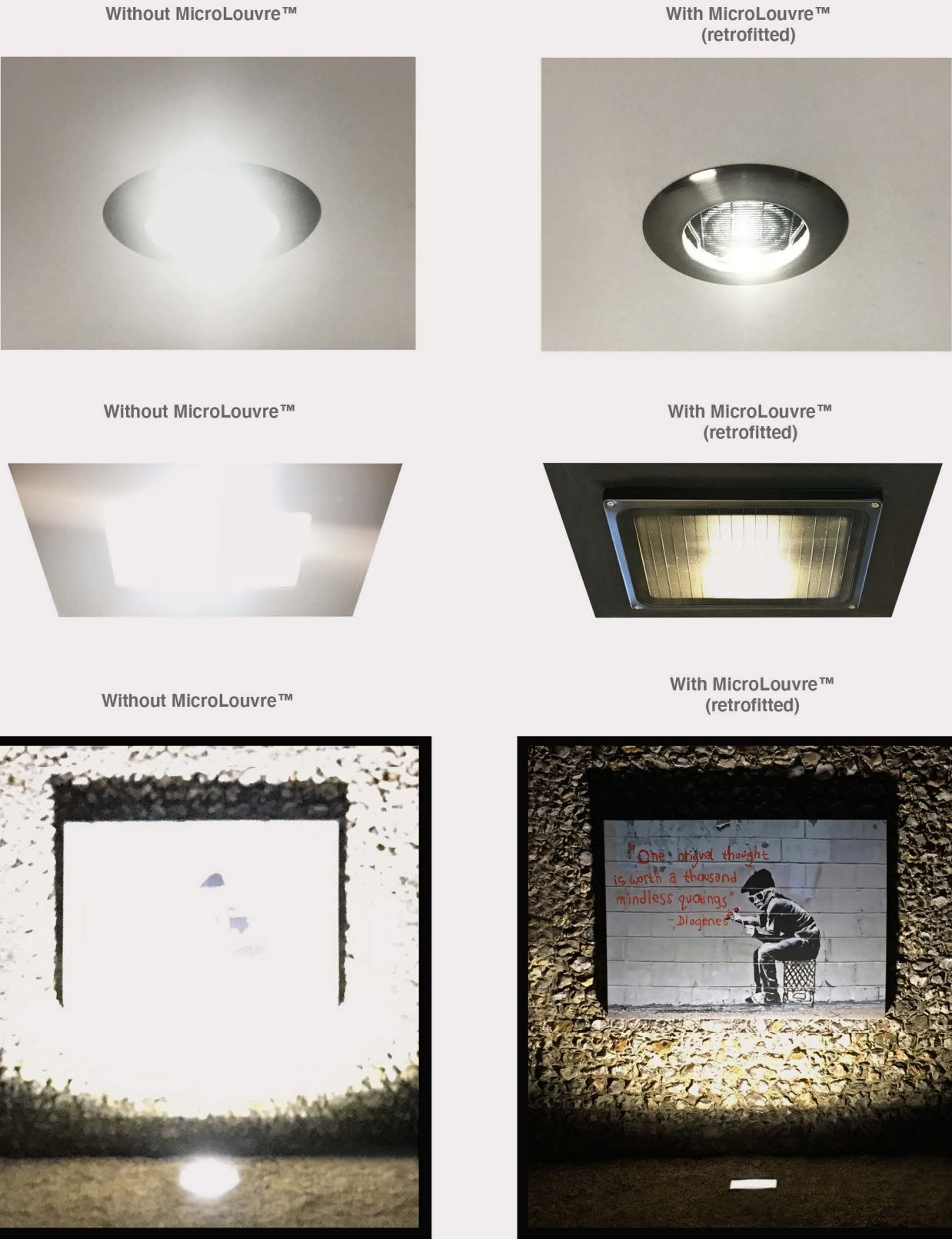
Obtrusive heavy external louvres, visors, hoods, films and lighting flags fitted to control light spill or light pollution are often considered something of a necessary evil. Not only do they interrupt the lighting unit's design and form, they generally negatively impact on the light output ratio (LOR) and purity (CRI).

Instead, lighting manufacturers and lighting designers are able to negate light trespass and overspill through integrating MicroLouvre™ metal fabric into lighting units. This ensures the light hits its intended target, without compromising on the quality of light output, as well as being a much more aesthetically pleasing and cost-efficient solution.



Anti-Glare

MicroLouvre™ achieves an integrated balance of glare control, high lumen transmission and concealed light source, making it the ideal solution for any high-powered light.



Details provided in this brochure were correct, to the best of our knowledge, at time of publication and are for information purposes only and do not form any obligation on our part. Smartlouvre will not be held liable for any discrepancies between the illustrations or descriptions given and the actual product. Figures stated are typical values. We reserve the right to make changes to our products without prior notice and at any time. All orders will be in accordance with the relevant versions of our Terms and Conditions of Sale, provided on request and/or available on our website.



### Anti-glare

Achieves an integrated balance of glare control and high lumen transmission



### Fire and heat resistant

Constructed of a bronze alloy the fabric is non-combustible, conforming to A1/A2 Fire Rating



### Directional light control

A choice in louvre angle can provide asymmetric light kick or symmetric light projection



### 100% UV resistant

Withstanding the negative impact of ultraviolet radiation



### Light source concealment

Blocking all light from one direction, whilst illuminating from the other



### 80% Open area

Permits optimum light transfer, ensuring high energy efficiency



### Light spill/trespass solution

Concentrating the light source to the intended direction



### Ultra-thin & easy to fit

Can be incorporated into any original equipment or retrofit into existing units

DN: LS-B-01 GAR SEPT20

Details provided in this brochure were correct, to the best of our knowledge at the time of publication and are for information purposes only and do not form any obligation on our part. Smartlouvre Technology Ltd will not be held liable for any discrepancies between the illustrations or descriptions given and the actual product. Figures stated are typical values. We reserve the right to make changes to our products without prior notice and at any time. All orders will be in accordance with the relevant versions of our Terms and Conditions of Sale provided on request and/or available on our website.